



TSHOOT

Lab Guide

300-135

Labs powered by



TSHOOT

300-135 Lab Guide



25 Century Blvd., Ste. 500, Nashville, TN 37214 | Boson.com

To perform the labs referenced in this book, please download and install the necessary files (refer to your purchase receipt for the download link), navigate to the appropriate lab in the lab menu in the Boson NetSim, and load the lab; all labs should work in NetSim 11 or later. To learn more about the Boson NetSim or to purchase and download the software, please visit www.boson.com/netsim.

Copyright © 2017 Boson Software, LLC. All rights reserved. Boson, Boson NetSim, Boson Network Simulator, and Boson Software are trademarks or registered trademarks of Boson Software, LLC. Catalyst, Cisco, and Cisco IOS are trademarks or registered trademarks of Cisco Systems, Inc. in the United States and certain other countries. Media elements, including images and clip art, are the property of Microsoft. All other trademarks and/or registered trademarks are the property of their respective owners. Any use of a third-party trademark does not constitute a challenge to said mark. Any use of a product name or company name herein does not imply any sponsorship of, recommendation of, endorsement of, or affiliation with Boson, its licensors, licensees, partners, affiliates, and/or publishers.

Module 2: Troubleshooting Tools and Techniques 11

Lab 2.1 – Troubleshooting a Network Topology.....	12
Lab Tasks	12
Lab Solutions.....	13
Lab 2.2 – Network Troubleshooting	22
Lab Tasks	24
Lab Solutions.....	25
Lab 2.3 – debug and traceroute Commands	33
Lab Tasks	35
Lab Solutions.....	36
Lab 2.4 – Network Troubleshooting with the OSI Model	40
Lab Tasks	42
Lab Solutions.....	45

Module 4: Basic Network Services Troubleshooting55

Lab 4.1 – Troubleshooting Basic Network Services Part I.....	56
Lab Tasks	58
Lab Solutions.....	59
Lab Tasks	68
Lab Solutions.....	70
Lab Tasks	71
Lab Solutions.....	84
Lab Tasks	85

A sample lab is included in this document to display the quality, format, and content of labs that are included in the Boson NetSim and the Boson Courseware products. However, you will not be able to work through this lab in NetSim without purchasing both Boson NetSim and the Boson ICND2 Courseware Lab Pack.

Module 5: Basic Security.....99

Lab 5.1 – Troubleshooting Access Lists Part I.....	100
Lab Tasks	102
Lab Solutions.....	103
Lab 5.2 – Troubleshooting Access Lists Part II – Extended ACLs	107
Lab Tasks	108
Lab Solutions.....	110
Lab 5.3 – Troubleshooting Access Lists Part III – Standard ACLs	115
Lab Tasks	116
Lab Solutions.....	118
Lab 5.4 – Troubleshooting Access Lists Part IV – Named ACLs.....	122
Lab Tasks	123
Lab Solutions.....	126
Lab 5.5 – Troubleshooting Access Lists Part V – Named ACLs.....	131
Lab Tasks	132
Lab Solutions.....	135

Module 6: Switch Troubleshooting 141

Lab 6.1 – Troubleshooting Spanning Tree	142
Lab Tasks	143
Lab Solutions.....	144
Lab 6.2 – Troubleshooting MST.....	148
Lab Tasks	149
Lab Solutions.....	150
Module 7: Multilayer Switch Troubleshooting	155
Lab 7.1 – Troubleshooting EtherChannel Part I	156
Lab Tasks	157
Lab Solutions.....	158
Lab 7.2 – Troubleshooting EtherChannel Part II.....	163
Lab Tasks	164
Lab Solutions.....	165
Lab 7.3 – Troubleshooting HSRP.....	170
Lab Tasks	172
Lab Solutions.....	173
Lab 7.4 – Troubleshooting GRRP.....	179
Lab Tasks	181
Lab Solutions.....	182
Module 8: Basic Router Troubleshooting	189
Lab 8.1 – Troubleshooting RSTP.....	190
Lab Tasks	191
Lab Solutions.....	192
Lab 8.2 – Troubleshooting Route Filters.....	196
Lab Tasks	197
Lab Solutions.....	198
Module 9: Troubleshooting Routing Protocols	205
Lab 9.1 – Troubleshooting Routing Protocols	206
Lab Tasks	207
Lab Solutions.....	208
Lab 9.2 – Troubleshooting Basic BGP.....	213
Lab Tasks	214
Lab Solutions.....	215
Lab 9.3 – Troubleshooting BGP.....	221
Lab Tasks	224
Lab Solutions.....	225
Lab 9.4 – Troubleshooting EIGRP Routing.....	237
Lab Tasks	238
Lab Solutions.....	239
Lab 9.5 – Troubleshooting EIGRP in Named Mode.....	244

A sample lab is included in this document to display the quality, format, and content of labs that are included in the Boson NetSim and the Boson Courseware products. However, you will not be able to work through this lab in NetSim without purchasing both Boson NetSim and the Boson CCNP Courseware Lab Pack.

Please visit www.boson.com for more information.

Lab Tasks	246
Lab Solutions.....	247
Lab 9.6 – Troubleshooting OSPF Routing Part I	253
Lab Tasks	255
Lab Solutions.....	256
Lab 9.7 – Troubleshooting OSPF Routing Part II.....	261
Lab Tasks	263
Lab Solutions.....	264
Module 10: Preparing for the TSHOOT Exam.....	269
Lab 10.1 – Troubleshooting Ticket 1	270
Lab Tasks	272
Lab Solutions.....	274
Lab 10.2 – Troubleshooting Ticket 2.....	280
Lab Tasks	282
Lab Solutions.....	284
Lab 10.3 – Troubleshooting Ticket 3.....	291
Lab Tasks	293
Lab Solutions.....	295
Lab 10.4 – Troubleshooting Ticket 4.....	300
Lab Tasks	302
Lab Solutions.....	304
Lab 10.5 – Troubleshooting Ticket 5.....	310
Lab Tasks	312
Lab Solutions.....	314
Lab 10.6 – Troubleshooting Ticket 6.....	319
Lab Tasks	321
Lab Solutions.....	323
Lab 10.7 – Troubleshooting Ticket 7	332
Lab Tasks	334
Lab Solutions.....	336
Lab 10.8 – Troubleshooting Ticket 8.....	344
Lab Tasks	346
Lab Solutions.....	348
Lab 10.9 – Troubleshooting Ticket 9.....	355
Lab Tasks	357
Lab Solutions.....	360
Lab 10.10 – Troubleshooting Ticket 10.....	366
Lab Tasks	368
Lab Solutions.....	371
Lab 10.11 – Troubleshooting Ticket 11.....	376
Lab Tasks	378
Lab Solutions.....	380

A sample lab is included in this document to display the quality, format, and content of labs that are included in the Boson NetSim and the Boson Courseware products. However, you will not be able to work through this lab in NetSim without purchasing both Boson NetSim and the Boson CCNP Courseware Lab Pack.

Please visit www.boson.com for more information.

Lab 10.12 – Troubleshooting Ticket 12..... 386
 Lab Tasks 388
 Lab Solutions..... 390
 Lab 10.13 – Troubleshooting Ticket 13..... 395
 Lab Tasks 397
 Lab Solutions..... 399
 Lab 10.14 – Troubleshooting Ticket 14..... 407

A sample lab is included in this document to display the quality, format, and content of labs that are included in the Boson NetSim and the Boson Courseware products. However, you will not be able to work through this lab in NetSim without purchasing both Boson NetSim and the Boson CCNP Courseware Lab Pack.

Please visit www.boson.com for more information.

Module 2

Lab 2.1 – Troubleshooting a Network Topology

Lab 2.2 – Network Troubleshooting

Lab 2.3 – **debug** and **tracert** Commands

Lab 2.4 – Network Troubleshooting with the OSI Model

Labs powered by



Lab 2.1 – Troubleshooting a Network Topology

To perform this lab in Boson NetSim, please download the necessary files (refer to your purchase receipt for the download link), navigate to the appropriate lab in the lab menu in NetSim, and load the lab. You can then accomplish the tasks below.

Objective

This lab corresponds to TSHOOTv2 Module 2: Troubleshooting Tools and Techniques, of Boson's CCNP Curriculum. In this lab, you will use Cisco Discovery Protocol (CDP) to build a network map of your current network. To complete this lab, use common **show** commands to determine what types of devices are contained in the network and how they are interconnected. Connect to each device in the topology, and use the appropriate commands from the command summary to determine the network topology configured for this lab.

The commands you will need to perform the tasks in this lab, along with their syntax and descriptions, are shown in the Command Summary table below:

Command Summary

Command	Description
configure terminal	enters global configuration mode from privileged EXEC mode
enable	enters privileged EXEC mode
end	ends and exits configuration mode
exit	exits one level in the menu structure
show cdp neighbors	displays information about directly connected Cisco devices
show cdp neighbors detail	displays directly connected neighbor devices and their device types, interface names, and IP addresses
show interfaces <i>[type number]</i>	displays statistics for all interfaces configured on the router
show running-config	displays the active configuration file

Lab Tasks

In the space below, draw the network topology configured for this lab. Include the device types and the interface type and number used to connect the devices.

Lab Solutions

The **show cdp neighbors** and **show cdp neighbors detail** commands will help you determine what Cisco devices are included in the network topology.

The **show cdp neighbors** command on Router1 shows that a device with the host name **Router2** is connected to it. However, the device name might not always represent the device type. For example, the host name **Router2** could have been configured as **Tampa** and would thus not indicate that the device is a router.

The **show cdp neighbors detail** command lists the `Device ID`, which is the host name configured for the device, `Capabilities`, which is the type of device, and `Port ID`, which is the outgoing port used to connect a directly connected Cisco device. This information will help you determine what Cisco devices are included in the network topology configured for this lab.

The following is sample output from the **show cdp neighbors detail** command:

```
Router1#show cdp neighbors detail
-----
Device ID: Router2
Entry address(es):
  IP address: 198.51.100.2
Platform: Boson 3640 , Capabilities: Router
Interface: Ser0/0, Port ID (outgoing port): Ser 0/0
Holdtime: 151 sec

Version :
Boson Operating System Software
Software, Version 15.b, RELEASE SOFTWARE (fc2)
Copyright (c) 1986-2017 by Systems, Inc.
Compiled Fri 02-Mar-09 17:34 by dchih

-----
Device ID: DSW2
Entry address(es):
Platform: Boson 3550 , Capabilities: Trans-Bridge Switch
Interface: Eth0/1, Port ID (outgoing port): Fas 0/1
Holdtime: 151 sec

Version :
Boson Operating System Software
Software, Version 15.b, RELEASE SOFTWARE (fc2)
Copyright (c) 1986-2017 by Systems, Inc.
Compiled Fri 02-Mar-09 17:34 by dchih

-----
Device ID: DSW1
Entry address(es):
Platform: Boson 3550 , Capabilities: Trans-Bridge Switch
Interface: Eth0/0, Port ID (outgoing port): Fas 0/1
Holdtime: 151 sec
```

```
Version :  
Boson Operating System Software  
Software, Version 15.b, RELEASE SOFTWARE (fc2)  
Copyright (c) 1986-2017 by Systems, Inc.  
Compiled Fri 02-Mar-09 17:34 by dchih
```

```
Router2#show cdp neighbors detail
```

```
-----  
Device ID: Router1  
Entry address(es):  
  IP address: 198.51.100.1  
Platform: Boson 3640 , Capabilities: Router  
Interface: Ser0/0, Port ID (outgoing port): Ser 0/0  
Holdtime: 161 sec
```

```
Version :  
Boson Operating System Software  
Software, Version 15.b, RELEASE SOFTWARE (fc2)  
Copyright (c) 1986-2017 by Systems, Inc.  
Compiled Fri 02-Mar-09 17:34 by dchih
```

```
-----  
Device ID: DSW2  
Entry address(es):  
Platform: Boson 3550 , Capabilities: Trans-Bridge Switch  
Interface: Eth0/1, Port ID (outgoing port): Fas 0/2  
Holdtime: 161 sec
```

```
Version :  
Boson Operating System Software  
Software, Version 15.b, RELEASE SOFTWARE (fc2)  
Copyright (c) 1986-2017 by Systems, Inc.  
Compiled Fri 02-Mar-09 17:34 by dchih
```

```
-----  
Device ID: DSW1  
Entry address(es):  
Platform: Boson 3550 , Capabilities: Trans-Bridge Switch  
Interface: Eth0/0, Port ID (outgoing port): Fas 0/2  
Holdtime: 161 sec
```

```
Version :  
Boson Operating System Software  
Software, Version 15.b, RELEASE SOFTWARE (fc2)  
Copyright (c) 1986-2017 by Systems, Inc.  
Compiled Fri 02-Mar-09 17:34 by dchih
```

```
DSW1#show cdp neighbors detail
```

```
-----  
Device ID: Router2  
Entry address(es):  
  IP address: 198.51.100.13  
Platform: Boson 3640 , Capabilities: Router  
Interface: Fas0/2, Port ID (outgoing port): Eth 0/0  
Holdtime: 141 sec
```

```
Version :  
Boson Operating System Software  
Software, Version 15.b, RELEASE SOFTWARE (fc2)  
Copyright (c) 1986-2017 by Systems, Inc.  
Compiled Fri 02-Mar-09 17:34 by dchih
```

```
-----  
Device ID: Router1  
Entry address(es):  
  IP address: 198.51.100.5  
Platform: Boson 3640 , Capabilities: Router  
Interface: Fas0/1, Port ID (outgoing port): Eth 0/0  
Holdtime: 141 sec
```

```
Version :  
Boson Operating System Software  
Software, Version 15.b, RELEASE SOFTWARE (fc2)  
Copyright (c) 1986-2017 by Systems, Inc.  
Compiled Fri 02-Mar-09 17:34 by dchih
```

```
-----  
Device ID: DSW2  
Entry address(es):  
Platform: Boson 3550 , Capabilities: Trans-Bridge Switch  
Interface: Fas0/3, Port ID (outgoing port): Fas 0/3  
Holdtime: 141 sec
```

```
Version :  
Boson Operating System Software  
Software, Version 15.b, RELEASE SOFTWARE (fc2)  
Copyright (c) 1986-2017 by Systems, Inc.  
Compiled Fri 02-Mar-09 17:34 by dchih
```

```
-----  
Device ID: DSW2  
Entry address(es):  
Platform: Boson 3550 , Capabilities: Trans-Bridge Switch  
Interface: Fas0/4, Port ID (outgoing port): Fas 0/4  
Holdtime: 141 sec
```

```
Version :  
Boson Operating System Software  
Software, Version 15.b, RELEASE SOFTWARE (fc2)  
Copyright (c) 1986-2017 by Systems, Inc.  
Compiled Fri 02-Mar-09 17:34 by dchih
```

```
-----  
Device ID: DSW2  
Entry address(es):  
Platform: Boson 3550 , Capabilities: Trans-Bridge Switch  
Interface: Fas0/5, Port ID (outgoing port): Fas 0/5  
Holdtime: 141 sec
```

```
Version :  
Boson Operating System Software  
Software, Version 15.b, RELEASE SOFTWARE (fc2)  
Copyright (c) 1986-2017 by Systems, Inc.  
Compiled Fri 02-Mar-09 17:34 by dchih
```

```
-----  
Device ID: DSW2  
Entry address(es):  
Platform: Boson 3550 , Capabilities: Trans-Bridge Switch  
Interface: Gig0/2, Port ID (outgoing port): Gig 0/2  
Holdtime: 141 sec
```

```
Version :  
Boson Operating System Software  
Software, Version 15.b, RELEASE SOFTWARE (fc2)  
Copyright (c) 1986-2017 by Systems, Inc.  
Compiled Fri 02-Mar-09 17:34 by dchih
```

```
-----  
Device ID: ASW2  
Entry address(es):  
Platform: Boson 2960-8TC-L , Capabilities: Trans-Bridge Switch  
Interface: Fas0/6, Port ID (outgoing port): Fas 0/8  
Holdtime: 142 sec
```

```
Version :  
Boson Operating System Software  
Software, Version 15.b, RELEASE SOFTWARE (fc2)  
Copyright (c) 1986-2017 by Systems, Inc.  
Compiled Fri 02-Mar-09 17:34 by dchih
```

```
-----  
Device ID: ASW1  
Entry address(es):  
Platform: Boson 2960-8TC-L , Capabilities: Trans-Bridge Switch  
Interface: Gig0/1, Port ID (outgoing port): Gig 0/1  
Holdtime: 142 sec
```

```
Version :  
Boson Operating System Software  
Software, Version 15.b, RELEASE SOFTWARE (fc2)  
Copyright (c) 1986-2017 by Systems, Inc.  
Compiled Fri 02-Mar-09 17:34 by dchih
```

```
DSW2#show cdp neighbors detail
```

```
-----  
Device ID: Router2  
Entry address(es):  
  IP address: 198.51.100.17  
Platform: Boson 3640 , Capabilities: Router  
Interface: Fas0/2, Port ID (outgoing port): Eth 0/1  
Holdtime: 174 sec
```

```
Version :  
Boson Operating System Software  
Software, Version 15.b, RELEASE SOFTWARE (fc2)  
Copyright (c) 1986-2017 by Systems, Inc.  
Compiled Fri 02-Mar-09 17:34 by dchih
```

```
-----  
Device ID: Router1  
Entry address(es):  
  IP address: 198.51.100.9  
Platform: Boson 3640 , Capabilities: Router  
Interface: Fas0/1, Port ID (outgoing port): Eth 0/1  
Holdtime: 174 sec
```

```
Version :  
Boson Operating System Software  
Software, Version 15.b, RELEASE SOFTWARE (fc2)  
Copyright (c) 1986-2017 by Systems, Inc.  
Compiled Fri 02-Mar-09 17:34 by dchih
```

```
-----  
Device ID: DSW1  
Entry address(es):  
Platform: Boson 3550 , Capabilities: Trans-Bridge Switch  
Interface: Fas0/3, Port ID (outgoing port): Fas 0/3  
Holdtime: 174 sec
```

```
Version :  
Boson Operating System Software  
Software, Version 15.b, RELEASE SOFTWARE (fc2)  
Copyright (c) 1986-2017 by Systems, Inc.  
Compiled Fri 02-Mar-09 17:34 by dchih
```

```
-----  
Device ID: DSW1  
Entry address(es):  
Platform: Boson 3550 , Capabilities: Trans-Bridge Switch  
Interface: Fas0/4, Port ID (outgoing port): Fas 0/4  
Holdtime: 174 sec
```

```
Version :  
Boson Operating System Software  
Software, Version 15.b, RELEASE SOFTWARE (fc2)  
Copyright (c) 1986-2017 by Systems, Inc.  
Compiled Fri 02-Mar-09 17:34 by dchih
```

```
-----  
Device ID: DSW1  
Entry address(es):  
Platform: Boson 3550 , Capabilities: Trans-Bridge Switch  
Interface: Fas0/5, Port ID (outgoing port): Fas 0/5  
Holdtime: 174 sec
```

```
Version :  
Boson Operating System Software  
Software, Version 15.b, RELEASE SOFTWARE (fc2)  
Copyright (c) 1986-2017 by Systems, Inc.  
Compiled Fri 02-Mar-09 17:34 by dchih
```

```
-----  
Device ID: DSW1  
Entry address(es):  
Platform: Boson 3550 , Capabilities: Trans-Bridge Switch  
Interface: Gig0/2, Port ID (outgoing port): Gig 0/2  
Holdtime: 174 sec
```

```
Version :  
Boson Operating System Software  
Software, Version 15.b, RELEASE SOFTWARE (fc2)  
Copyright (c) 1986-2017 by Systems, Inc.  
Compiled Fri 02-Mar-09 17:34 by dchih
```



```
-----  
Device ID: ASW2  
Entry address(es):  
Platform: Boson 2960-8TC-L , Capabilities: Trans-Bridge Switch  
Interface: Gig0/1, Port ID (outgoing port): Gig 0/1  
Holdtime: 175 sec
```

```
Version :  
Boson Operating System Software  
Software, Version 15.b, RELEASE SOFTWARE (fc2)  
Copyright (c) 1986-2017 by Systems, Inc.  
Compiled Fri 02-Mar-09 17:34 by dchih
```

```
-----  
Device ID: ASW1  
Entry address(es):  
Platform: Boson 2960-8TC-L , Capabilities: Trans-Bridge Switch  
Interface: Fas0/6, Port ID (outgoing port): Fas 0/8  
Holdtime: 175 sec
```

```
Version :  
Boson Operating System Software  
Software, Version 15.b, RELEASE SOFTWARE (fc2)  
Copyright (c) 1986-2017 by Systems, Inc.  
Compiled Fri 02-Mar-09 17:34 by dchih
```

```
ASW1#show cdp neighbors detail
```

```
-----  
Device ID: DSW2  
Entry address(es):  
Platform: Boson 3550 , Capabilities: Trans-Bridge Switch  
Interface: Fas0/8, Port ID (outgoing port): Fas 0/6  
Holdtime: 154 sec
```

```
Version :  
Boson Operating System Software  
Software, Version 15.b, RELEASE SOFTWARE (fc2)  
Copyright (c) 1986-2017 by Systems, Inc.  
Compiled Fri 02-Mar-09 17:34 by dchih
```

```
-----  
Device ID: DSW1  
Entry address(es):  
Platform: Boson 3550 , Capabilities: Trans-Bridge Switch  
Interface: Gig0/1, Port ID (outgoing port): Gig 0/1  
Holdtime: 154 sec
```

```
Version :  
Boson Operating System Software  
Software, Version 15.b, RELEASE SOFTWARE (fc2)  
Copyright (c) 1986-2017 by Systems, Inc.  
Compiled Fri 02-Mar-09 17:34 by dchih
```

```
-----  
Device ID: ASW2  
Entry address(es):  
Platform: Boson 2960-8TC-L , Capabilities: Trans-Bridge Switch  
Interface: Fas0/1, Port ID (outgoing port): Fas 0/1  
Holdtime: 155 sec
```

```
Version :  
Boson Operating System Software  
Software, Version 15.b, RELEASE SOFTWARE (fc2)  
Copyright (c) 1986-2017 by Systems, Inc.  
Compiled Fri 02-Mar-09 17:34 by dchih
```

```
ASW2#show cdp neighbors detail
```

```
-----  
Device ID: DSW2  
Entry address(es):  
Platform: Boson 3550 , Capabilities: Trans-Bridge Switch  
Interface: Gig0/1, Port ID (outgoing port): Gig 0/1  
Holdtime: 140 sec
```

```
Version :  
Boson Operating System Software  
Software, Version 15.b, RELEASE SOFTWARE (fc2)  
Copyright (c) 1986-2017 by Systems, Inc.  
Compiled Fri 02-Mar-09 17:34 by dchih
```

```
-----  
Device ID: DSW1  
Entry address(es):  
Platform: Boson 3550 , Capabilities: Trans-Bridge Switch  
Interface: Fas0/8, Port ID (outgoing port): Fas 0/6  
Holdtime: 140 sec
```

```
Version :  
Boson Operating System Software  
Software, Version 15.b, RELEASE SOFTWARE (fc2)  
Copyright (c) 1986-2017 by Systems, Inc.  
Compiled Fri 02-Mar-09 17:34 by dchih
```

```

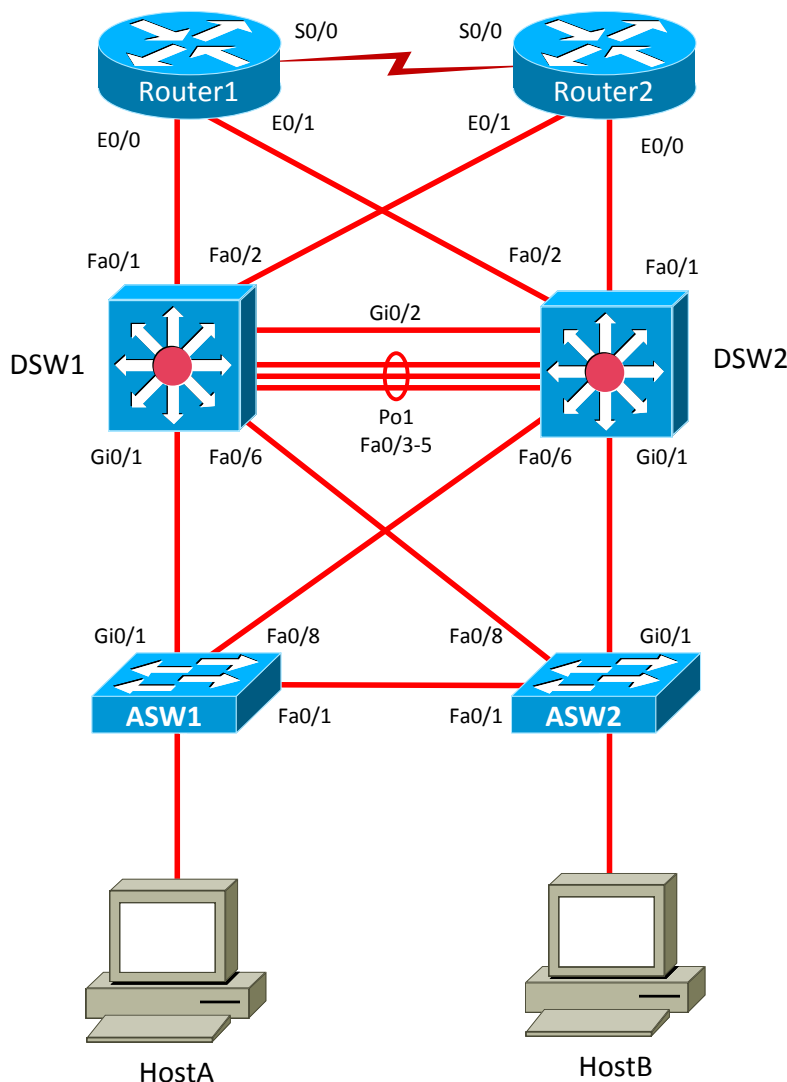
-----
Device ID: ASW1
Entry address(es):
Platform: Boson 2960-8TC-L , Capabilities: Trans-Bridge Switch
Interface: Fas0/1, Port ID (outgoing port): Fas 0/1
Holdtime: 141 sec
  
```

```

Version :
Boson Operating System Software
Software, Version 15.b, RELEASE SOFTWARE (fc2)
Copyright (c) 1986-2017 by Systems, Inc.
Compiled Fri 02-Mar-09 17:34 by dchih
  
```

Lab Topology

The information obtained by using the **show cdp neighbors detail** command is represented in the following topology:



Certification Candidates

Boson Software's ExSim-Max practice exams are designed to simulate the complete exam experience. These practice exams have been written by in-house authors who have over 30 years combined experience writing practice exams. ExSim-Max is designed to simulate the live exam, including topics covered, question types, question difficulty, and time allowed, so you know what to expect. To learn more about ExSim-Max practice exams, please visit www.boson.com/exsim-max-practice-exams or contact Boson Software.

Organizational and Volume Customers

Boson Software's outstanding IT training tools serve the skill development needs of organizations such as colleges, technical training educators, corporations, and governmental agencies. If your organization would like to inquire about volume opportunities and discounts, please contact Boson Software at orgsales@boson.com.

Contact Information

E-Mail: support@boson.com
Phone: 877-333-EXAM (3926)
615-889-0121
Fax: 615-889-0122
Address: 25 Century Blvd., Ste. 500
Nashville, TN 37214





B o s o n . c o m

8 7 7 . 3 3 3 . 3 9 2 6 s u p p o r t @ b o s o n . c o m

© Copyright 2017 Boson Software, LLC. All rights reserved.